

**College of Engineering  
2012 Review**

**Enrollment Trends  
FTE Production  
Degree Trends  
Research Expenditures**

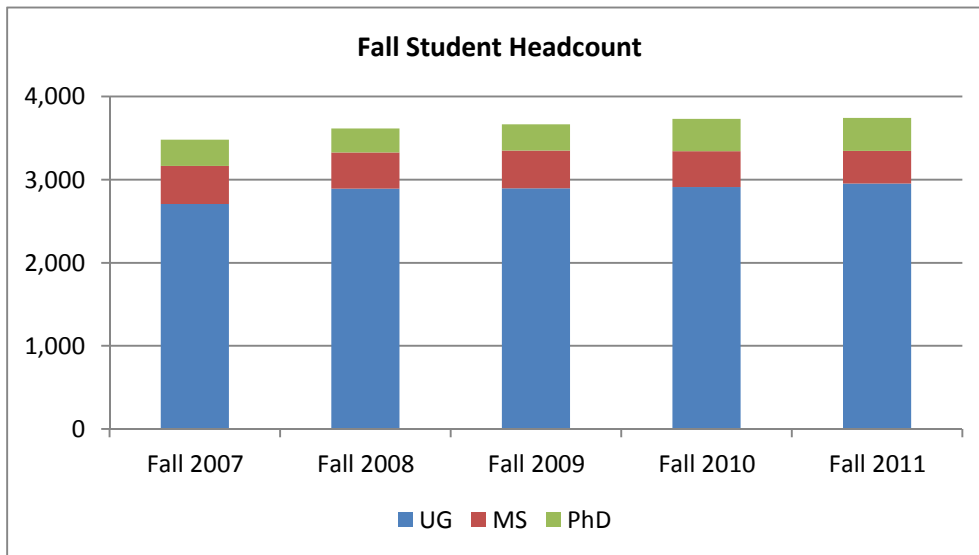
## Fall Enrollment: COE

### Enrollment

Term	UG	MS	PhD	Total
Fall 2006	2647	403	321	<b>3371</b>
Fall 2007	2709	458	313	<b>3478</b>
Fall 2008	2891	437	288	<b>3616</b>
Fall 2009	2898	452	315	<b>3665</b>
Fall 2010	2912	431	389	<b>3732</b>
Fall 2011	2954	393	398	<b>3745</b>

### Enrollment: % Change from Prior Year

Term	UG	MS	PhD	Total
Fall 2006				
Fall 2007	2%	14%	-2%	3%
Fall 2008	7%	-5%	-8%	4%
Fall 2009	0%	3%	9%	1%
Fall 2010	0%	-5%	23%	2%
Fall 2011	1%	-9%	2%	0%



#### Undergraduate

- Enrollment has been steady for the last three years

#### Masters

- 9% decrease in 2011.
- Efforts to reverse this include:
  1. Emphasis on accelerated BS/MS Program
  2. Weekend Professional MS in Electrical Engineering is now approved

#### Doctoral

- 2% increase in 2011
- 50% decrease in new students

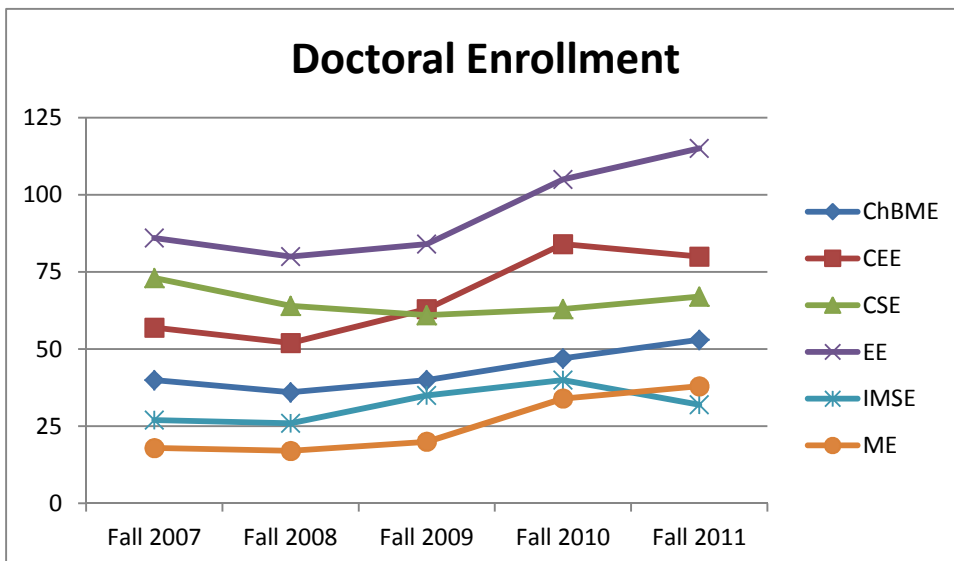
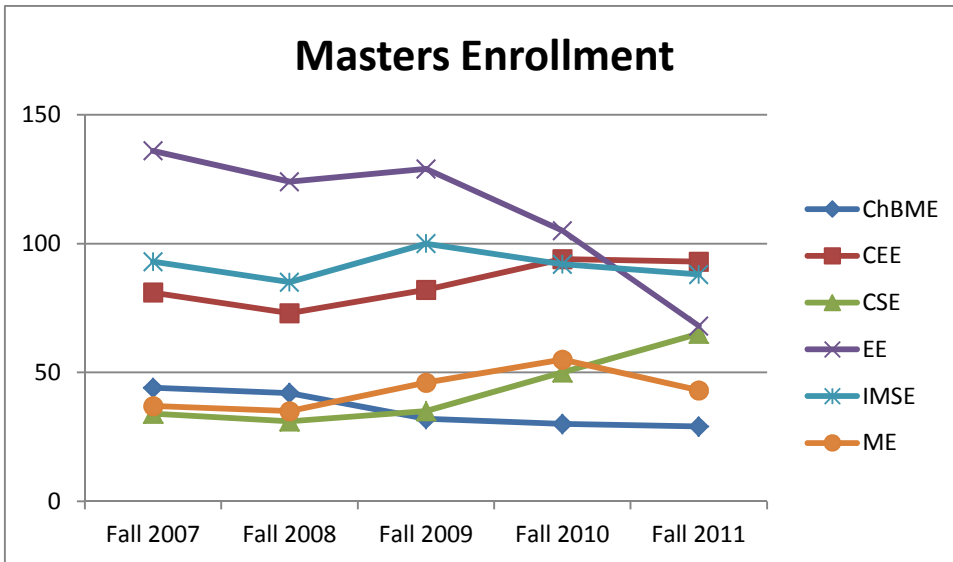
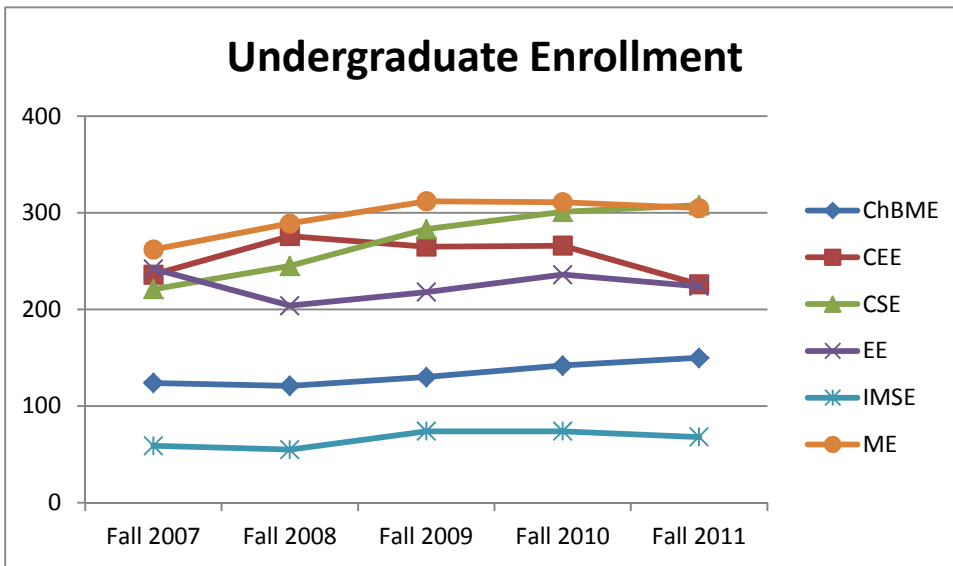
#### New PhD Students (Academic Year)

DEPT_DESC	2010-2011	2011-2012
Chemical & Biomedical Eng	19	10
Civil & Environmental Eng.	41	18
Electrical Engineering	38	20
Engineering Computer Science	23	13
Industrial Systems	10	5
Mechanical Engineering	24	9
<b>Grand Total</b>	<b>155</b>	<b>75</b>

#### Average Quantitative GRE Score of New PhD Students

	2010-2011	2011-2012
Average	728	720

## Enrollement by Department



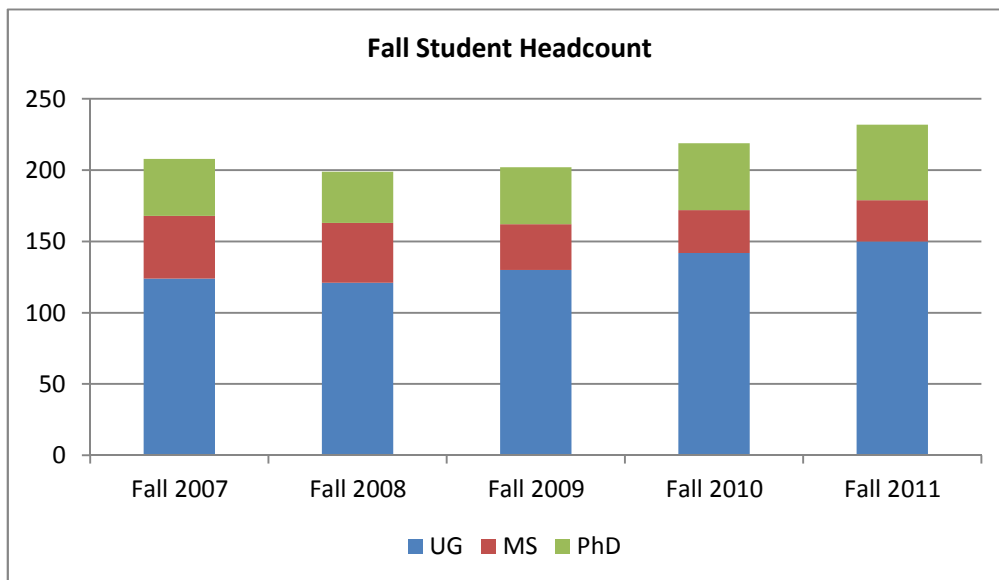
## Fall Enrollment: ChBME

### Enrollment

Term	UG	MS	PhD	Total
Fall 2006	113	45	32	<b>191</b>
Fall 2007	124	44	40	<b>208</b>
Fall 2008	121	42	36	<b>199</b>
Fall 2009	130	32	40	<b>202</b>
Fall 2010	142	30	47	<b>219</b>
Fall 2011	150	29	53	<b>232</b>

### Enrollment: % Change from Prior Year

Term	UG	MS	PhD	Total
Fall 2006				
Fall 2007	10%	-2%	25%	9%
Fall 2008	-2%	-5%	-10%	-4%
Fall 2009	7%	-24%	11%	2%
Fall 2010	9%	-6%	18%	8%
Fall 2011	6%	-3%	13%	6%



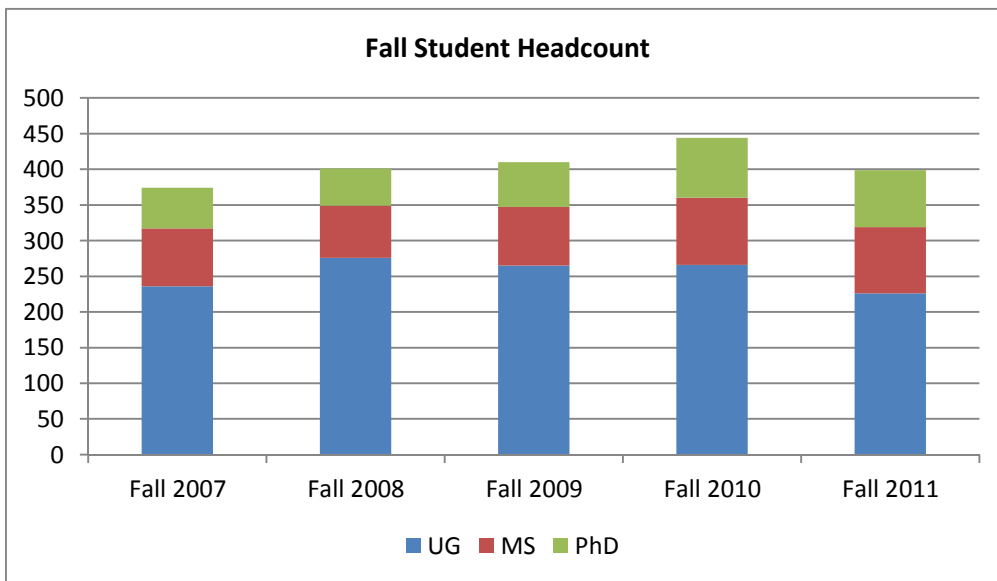
## Fall Enrollment: CEE

### Enrollment

Term	UG	MS	PhD	Total
Fall 2006	204	91	69	364
Fall 2007	236	81	57	374
Fall 2008	276	73	52	401
Fall 2009	265	82	63	410
Fall 2010	266	94	84	444
Fall 2011	226	93	80	399

### Enrollment: % Change from Prior Year

Term	UG	MS	PhD	Total
Fall 2006				
Fall 2007	16%	-11%	-17%	3%
Fall 2008	17%	-10%	-9%	7%
Fall 2009	-4%	12%	21%	2%
Fall 2010	0%	15%	33%	8%
Fall 2011	-15%	-1%	-5%	-10%



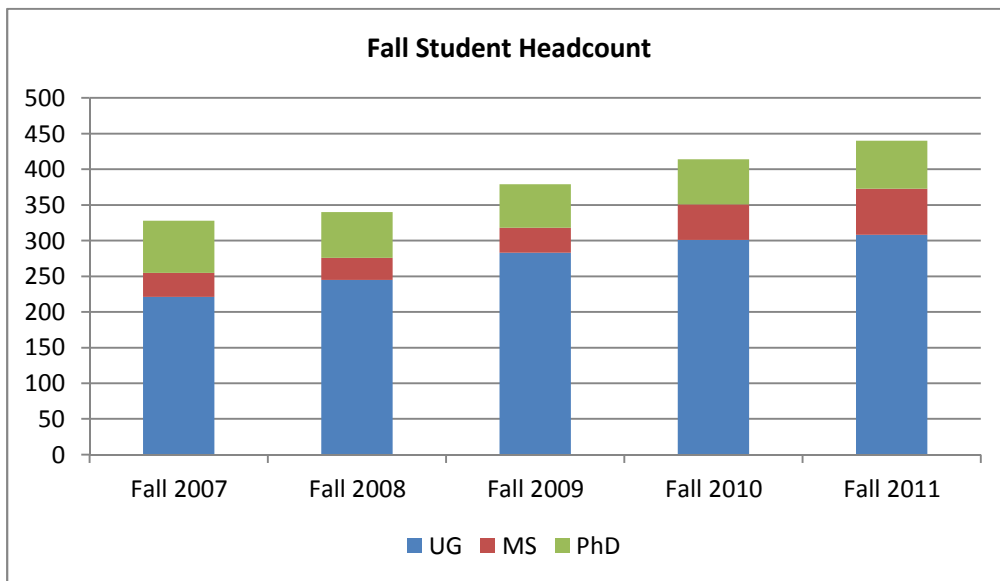
## Fall Enrollment: CSE

### Enrollment

Term	UG	MS	PhD	Total
Fall 2006	185	38	74	<b>297</b>
Fall 2007	221	34	73	<b>328</b>
Fall 2008	245	31	64	<b>340</b>
Fall 2009	283	35	61	<b>379</b>
Fall 2010	301	50	63	<b>414</b>
Fall 2011	308	65	67	440

### Enrollment: % Change from Prior Year

Term	UG	MS	PhD	Total
Fall 2006				
Fall 2007	19%	-11%	-1%	10%
Fall 2008	11%	-9%	-12%	4%
Fall 2009	16%	13%	-5%	11%
Fall 2010	6%	43%	3%	9%
Fall 2011	2%	30%	6%	6%



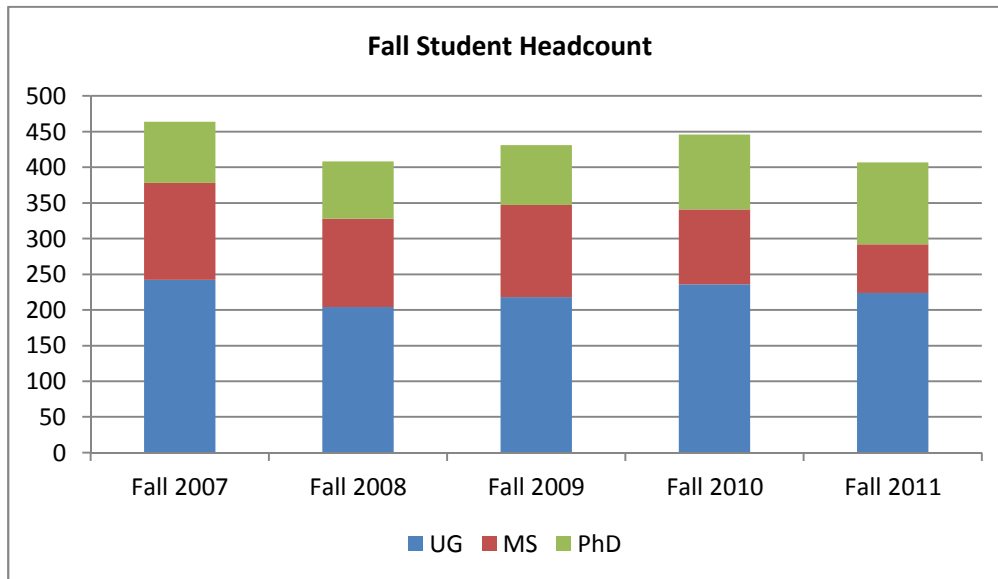
## Fall Enrollment: EE

### Enrollment

Term	UG	MS	PhD	Total
Fall 2006	272	115	78	465
Fall 2007	242	136	86	464
Fall 2008	204	124	80	408
Fall 2009	218	129	84	431
Fall 2010	236	105	105	446
Fall 2011	224	68	115	407

### Enrollment: % Change from Prior Year

Term	UG	MS	PhD	Total
Fall 2006				
Fall 2007	-11%	18%	10%	0%
Fall 2008	-16%	-9%	-7%	-12%
Fall 2009	7%	4%	5%	6%
Fall 2010	8%	-19%	25%	3%
Fall 2011	-5%	-35%	10%	-9%



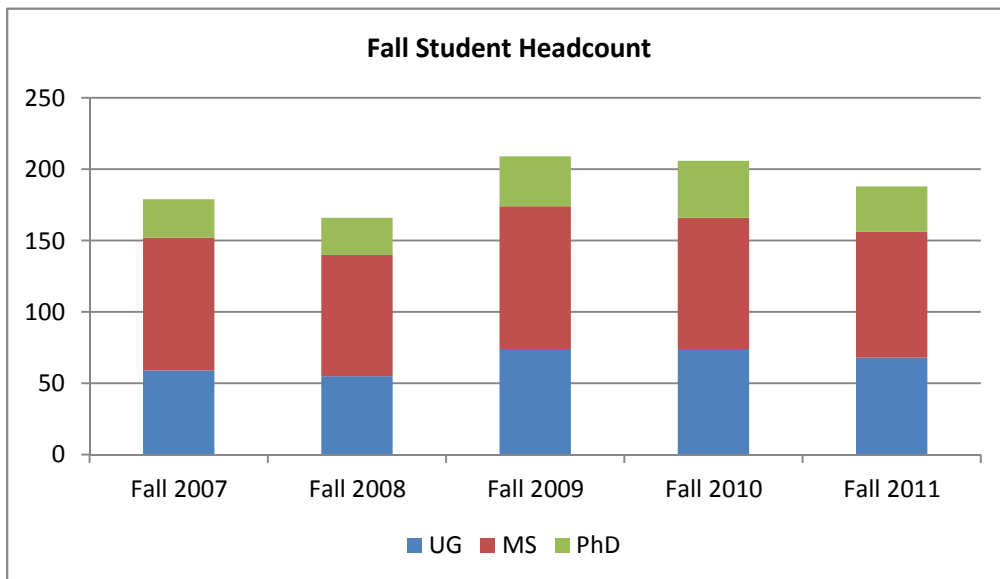
## Fall Enrollment: IMSE

### Enrollment

Term	UG	MS	PhD	Total
Fall 2006	66	86	24	176
Fall 2007	59	93	27	179
Fall 2008	55	85	26	166
Fall 2009	74	100	35	209
Fall 2010	74	92	40	206
Fall 2011	68	88	32	188

### Enrollment: % Change from Prior Year

Term	UG	MS	PhD	Total
Fall 2006				
Fall 2007	-11%	8%	13%	2%
Fall 2008	-7%	-9%	-4%	-7%
Fall 2009	35%	18%	35%	26%
Fall 2010	0%	-8%	14%	-1%
Fall 2011	-8%	-4%	-20%	-9%





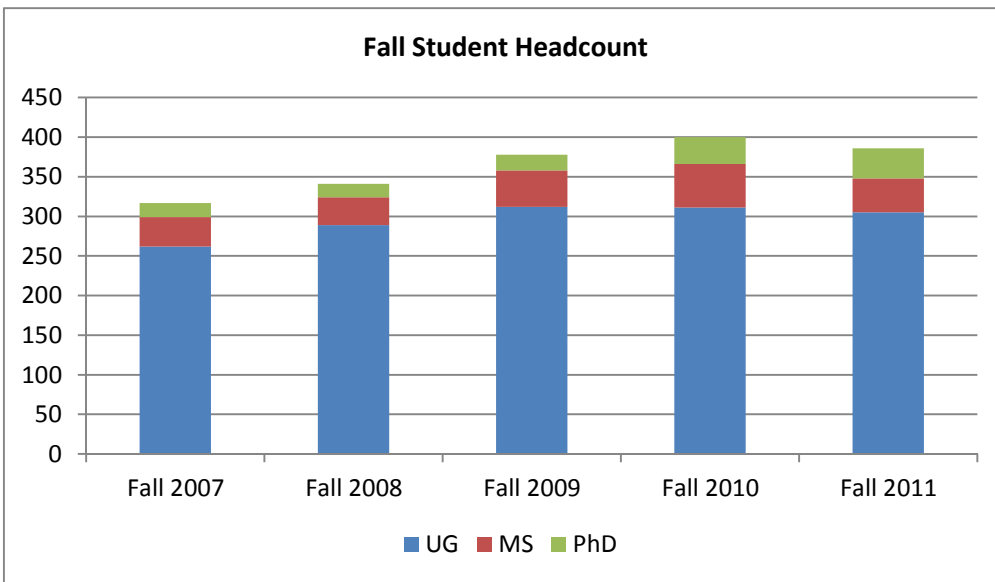
## Fall Enrollment: ME

### Enrollment

Term	UG	MS	PhD	Total
Fall 2006	275	34	17	<b>326</b>
Fall 2007	262	37	18	<b>317</b>
Fall 2008	289	35	17	<b>341</b>
Fall 2009	312	46	20	<b>378</b>
Fall 2010	311	55	34	<b>400</b>
Fall 2011	305	43	38	386

### Enrollment: % Change from Prior Year

Term	UG	MS	PhD	Total
Fall 2006				
Fall 2007	-5%	9%	6%	<b>-3%</b>
Fall 2008	10%	-5%	-6%	<b>8%</b>
Fall 2009	8%	31%	18%	<b>11%</b>
Fall 2010	0%	20%	70%	<b>6%</b>
Fall 2011	-2%	-22%	12%	<b>-4%</b>



## FTE Production

### Undergraduate

Overall Undergraduate FTE increased slightly

- Lower Level FTE increased from 103 to 104
- Upper Level FTE increased from 1028 to 1051

Incoming Freshman to COE (EGU)

	2009-2010	2010-2011	2011-2012
Average GPA	3.8	3.75	3.92
Average SAT (Q/C)	653/1254	650/1249	661/1266

### Graduate

Overall Graduate FTE decreased

- Grad I decreased from 233 to 213
- Grad II FTE increased from 219 to 220

New Masters Students

	2009-2010	2010-2011	2011-2012
Average UG GPA	3.3	3.2	3.28
Average GRE (Q)	685	700	708

New PhD Students

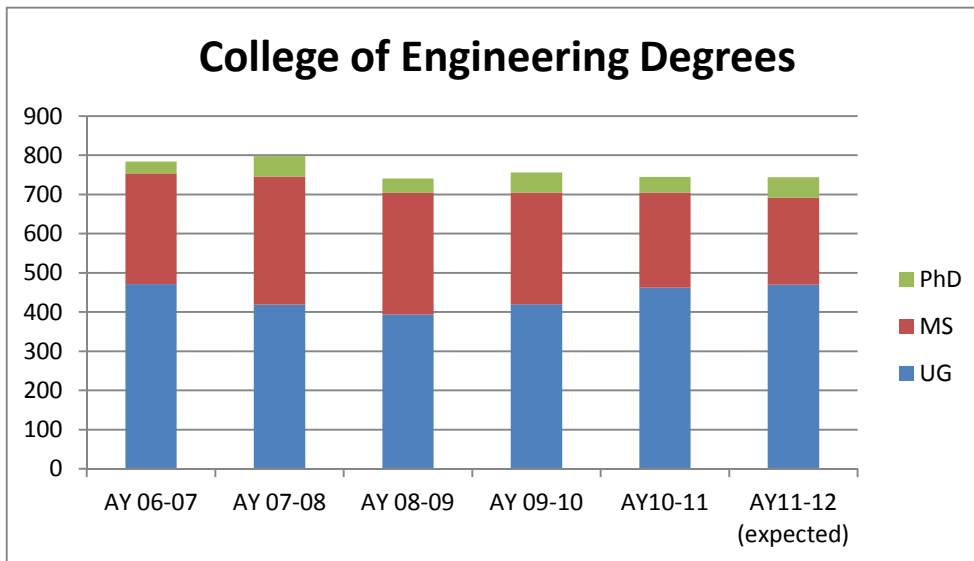
	2009-2010	2010-2011	2011-2012
Average UG GPA	3.3	3.6	3.33
Average GRE (Q)	725	733	720

## COE Degrees

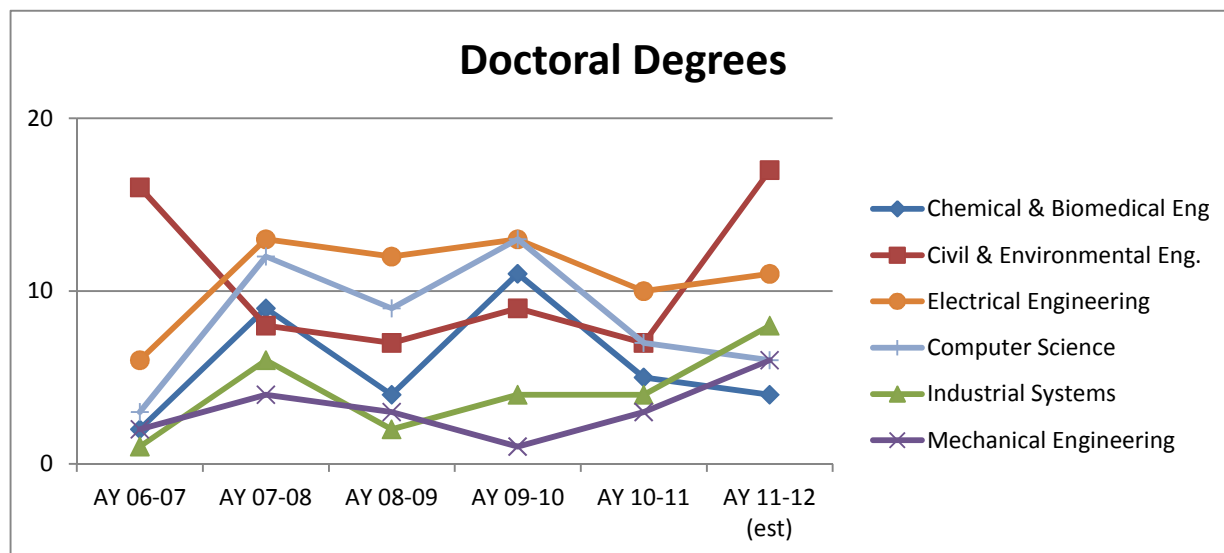
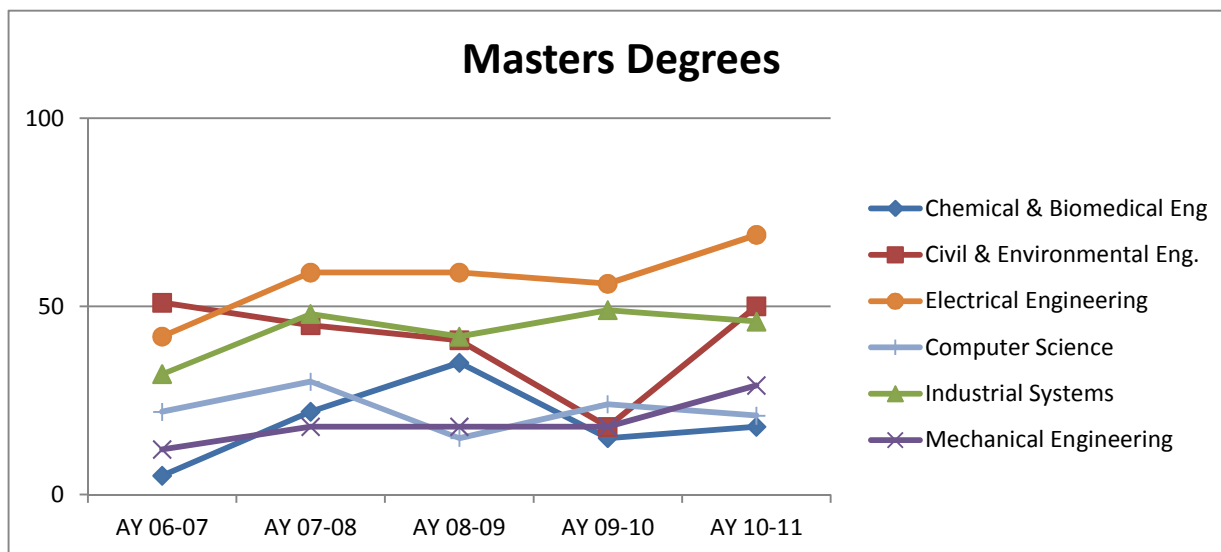
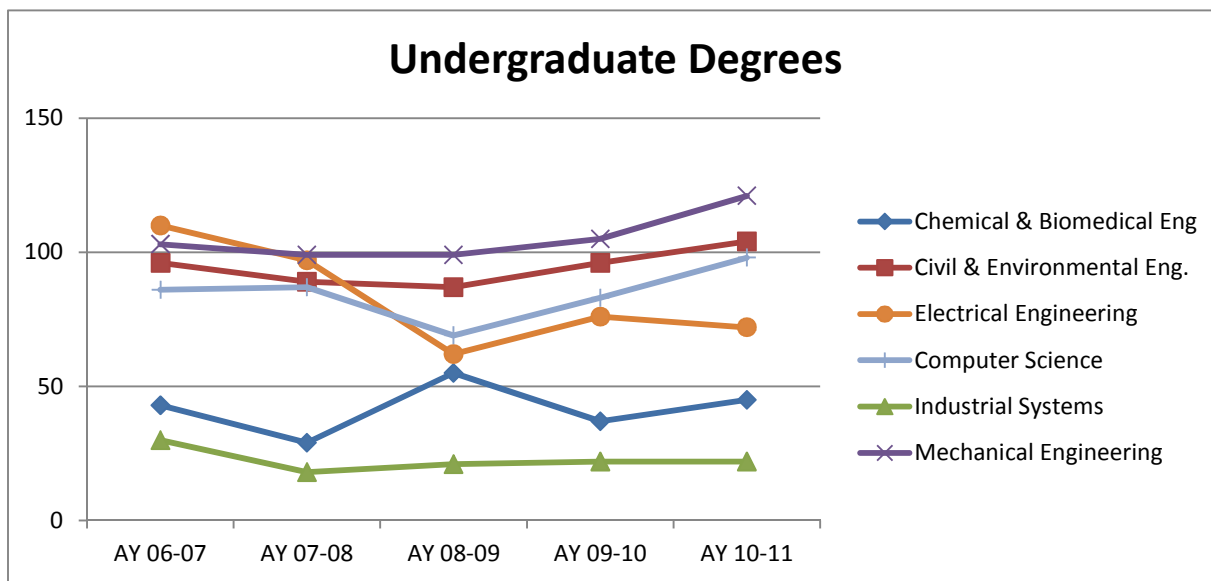
Term	UG	MS	PhD	Total
AY 05-06	402	271	21	694
AY 06-07	471	283	30	784
AY 07-08	419	327	52	798
AY 08-09	394	310	37	741
AY 09-10	420	285	51	756
AY10-11	462	243	40	745
AY11-12 (ex)	470	222	52	744

### Degrees: % Change from Prior Year

Term	UG	MS	PhD	Total
AY 05-06				
AY 06-07	17%	4%	43%	13%
AY 07-08	-11%	16%	73%	2%
AY 08-09	-6%	-5%	-29%	-7%
AY 09-10	7%	-8%	38%	2%
AY10-11	10%	-15%	-22%	-1%
AY11-12 (ex)	2%	-9%	30%	0%



## Degrees by Department



## Research Expenditures

	<b>Data Provided by Provost</b>	<b>College Report to ASEE</b>
<b>Fiscal Year</b>	<b>Total R and D Amount (\$)</b>	<b>ASEE Reported Amount (\$)*</b>
2005		24,816,132
2006	23,733,139	23,842,868
2007	22,685,634	22,606,907
2008	22,477,714	22,744,395
2009	20,760,723	23,923,018
2010	21,373,485	25,246,782
2011	24,344,624	28,477,226

\*Allowable ASEE reported research expenditures include:

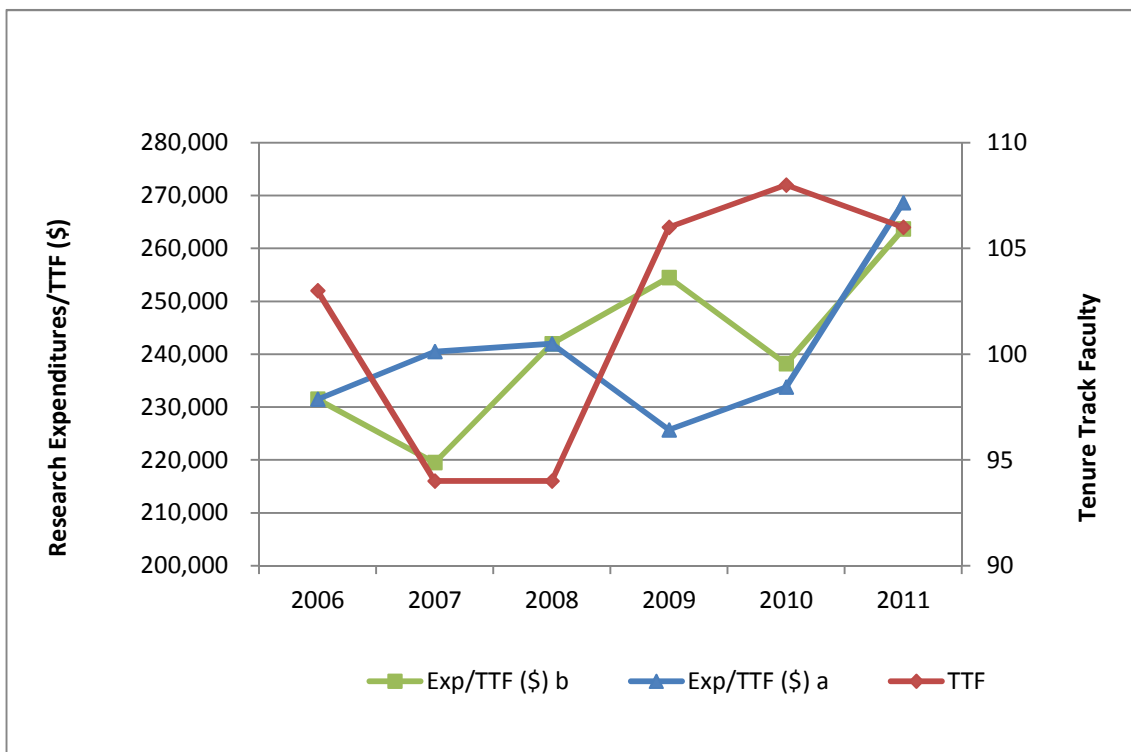
- Engineering Grants
- Florida Energy Systems Consortium (FESC)
- 21st Century Scholar
- Foundation Research
- High Tech Corridor
- Grad Student Fellowships (NSF, McKight, Sloan, NASA, etc.)

All categories except ENG Grants do not carry F&A charges

## Research Expenditures/TTF: COE

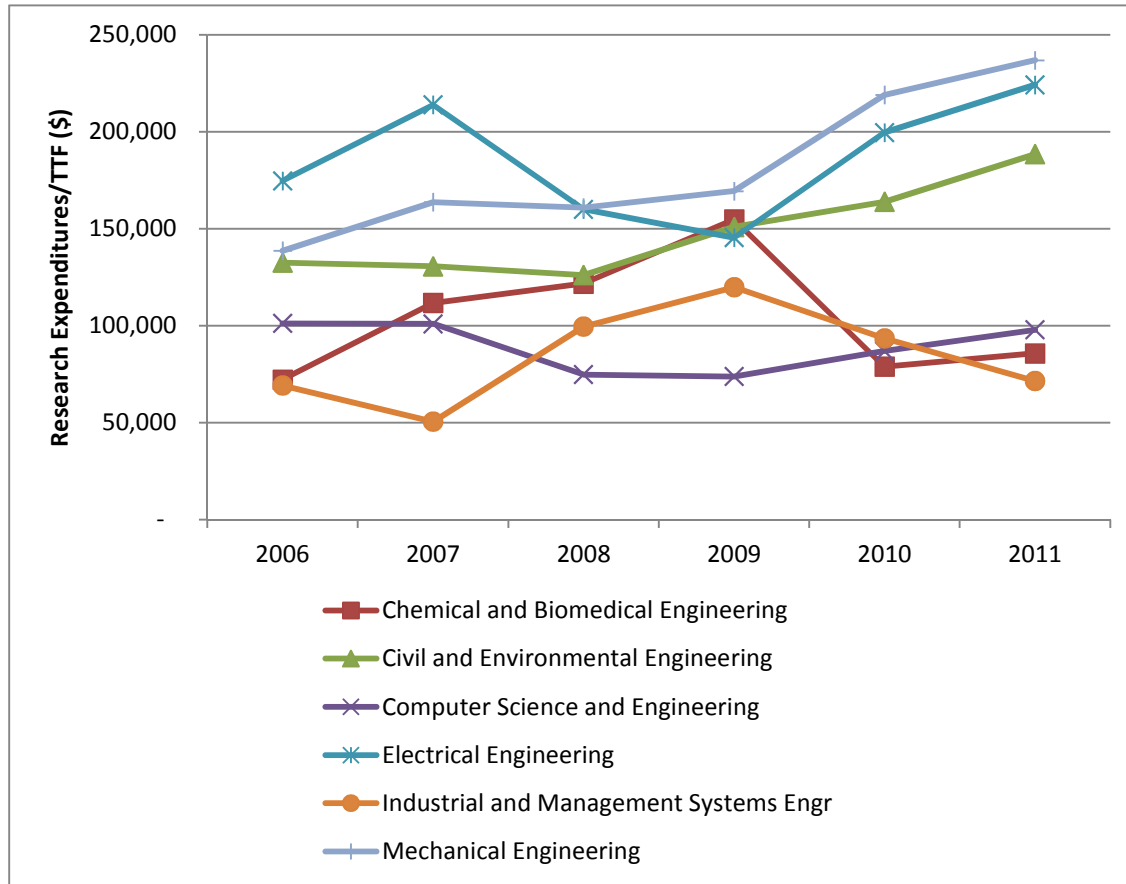
The following uses ASEE data:

Year (Fall)	TTF	FY 2011 Expenditures/ Fall 2011 TTF Exp/TTF (\$) a	FY 2011 Expenditures/ Fall 2010 TTF Exp/TTF (\$) b	
2005	103	240,933		
2006	103	231,484	231,484	
2007	94	240,499	219,485	
2008	94	241,962	241,962	
2009	106	225,689	254,500	
2010	108	233,767	238,177	<-- 12 new TTF faculty
2011	106	268,653	263,678	(11 new Assistant Professors)



## Research Expenditures/TTF: by Department

Department	2006	2007	2008	2009	2010	2011
Chemical and Biomedical Engineering	72,190	111,708	121,663	154,774	78,824	\$85,717
Civil and Environmental Engineering	132,466	130,583	126,042	150,909	163,789	\$188,415
Computer Science and Engineering	101,109	100,894	74,699	73,770	86,892	\$97,821
Electrical Engineering	174,632	213,791	159,990	145,336	199,592	\$224,148
Industrial and Management Systems Engr	69,117	50,493	99,488	119,778	93,392	\$71,397
Mechanical Engineering	138,601	163,637	160,866	169,369	218,900	\$236,874



## Faculty Fall 2010

Tenure Track

Salary Plan                  Faculty  
Employee Class              (All)

Count of Employee ID	Class Title2	Class Title	Job Code		Grand Total
			Assistant Professor	Assoc Professor	
<b>Department Name</b>					
<b>Employee Name</b>					
ChBME				1	1
				1	1
				1	1
				1	1
				1	1
				1	1
				1	1
			1		1
				1	1
		1			1
		1			1
				1	1
				1	1
		1			1
			1		1
CEE				1	1
				1	1
		1			1
			1		1
				1	1
				1	1
		1			1
				1	1
				1	1
				1	1
		1			1
		1			1
		1			1
				1	1
				1	1
		1			1
		1			1
		1			1
				1	1
		1			1
		1			1
				1	1
				1	1
College Engineering Dean				1	1
CSE				1	1
				1	1
				1	1
		1			1
				1	1
				1	1
				1	1
				1	1
		1			1
		1			1
				1	1
		1			1
				1	1
				1	1
		1			1
		1			1
		1			1
				1	1
				1	1
			1		1



Faculty Fall 2010

EE	Arslan,Huseyin		1		1
	Bhanja,Sanjukta		1		1
	Bhansali,Shekhar			1	1
	Buckle,Kenneth A		1		1
	Chiou,Yun-leei			1	1
	Domijan JR.,Alexander			1	1
	Dunleavy,Lawrence P			1	1
	Fan,Lingling	1			1
	Ferekides,Christos S			1	1
	Gitlin,Richard Dennis			1	1
	Hoff,Andrew M		1		1
	Jain,Vijay K			1	1
	Morel,Don L			1	1
	Moreno,Wilfrido A			1	1
	Morgera,Salvatore Domenic			1	1
	Mumcu,Gokhan	1			1
	Saddow,Stephen E			1	1
	Sankar,Ravi			1	1
	Schlaf,Rudiger		1		1
	Stefanakos,Elias K			1	1
	Takshi,Arash	1			1
	Thomas,Sylvia L.Wilson	1			1
	Wang,Jing	1			1
	Wiley,Paris H		1		1
Advising	Perez,Rafael A			1	1
Eng Res	Weller,Thomas M			1	1
IMSE	Centeno,Grisselle		1		1
	Das,Tapas K			1	1
	Lai Yuen,Susana Karina	1			1
	Okogbaa,Geoffrey O			1	1
	Reeves JR.,Kingsley Anthony	1			1
	Savachkin,Aliaksei Alexandrovich	1			1
	Weng,Michael X		1		1
	Yalcin,Ali		1		1
	Yang,Hui	1			1
	Zayas-Castro,Jose L			1	1
	Zeng,Bo	1			1
ME	Crane,Nathan B	1			1
	Dubey,Rajiv V			1	1
	Durham,Delcie Rena			1	1
	Gallant,Nathan	1			1
	Guldiken,Rasim	1			1
	Hess,Daniel P			1	1
	Kaw,Autar K			1	1
	Lusk,Craig P	1			1
	Porteiro,Jose L			1	1
	Pyrtle III,Frank	1			1
	Rahman,Muhammad M			1	1
	Reed,Kyle Brandon	1			1
	Volinsky,Alexei A		1		1
	Wilkinson,Stuart		1		1
NNRC	Kumar,Ashok			1	1
Grand Total		35	21	53	109

## Faculty Fall 2010

### Teaching, Non-Tenure Track

Salary Plan                      Faculty  
 Employee Class                Faculty/A&P Regular  
 Job Code                         (Multiple Items)

Count of Employee ID	Class Title						
Department Name	Employee Name	Instructor	Instructor I	Instructor II	Lecturer	Grand Total	
CEE	Magolan,Dennis J					1	
	Nohra,Karim				1	1	
	Phillips,Linda D					1	
	Stokes,Michael J	1				1	
	<b>CEE Total</b>		1		1	2	4
CSE	Jeanty,Henry H			1		1	
	Kellner JR.,Edward O	1				1	
	Tindell,Ralph S			1		1	
	Turner,Rollins			1		1	
	Wang,Jing			1		1	
<b>CSE Total</b>		1	4			5	
EE	Harlow III,Justin E			1		1	
<b>EE Total</b>				1		1	
IMSE	Schnitzler,Paul			1		1	
	Zarate,Patricia B			1		1	
<b>IMSE Total</b>				2		2	
ME	Mujumdar,Ajit Laxmikant	1				1	
<b>ME Total</b>		1				1	
<b>Grand Total</b>		3	7		1	2	13

### Non-Teaching, Research

Salary Plan                      Faculty  
 Employee Class                (All)  
 Job Code                         (Multiple Items)

Count of Employee ID	Class Title				
Department Name	Employee Name	Assistant In	Associate In	Research Associate	Grand Total
CEE	Trout,Kenneth E	1			1
	Winters,Danny	1			1
<b>CEE Total</b>		2			2

## Faculty Fall 2010

CUTR	Akerman,Martin	1		1
	Audino,Michael J	1		1
	Barbeau,Sean J.	1		1
	Bart,Edward Brian	1		1
	Begley,Justin T	1		1
	Bond,Alexander T	1		1
	Bond,Julie Marie	1		1
	Brosch,Gary L		1	1
	Catala,Martin W	1		1
	Chu,Xuehao		1	1
	Concas,Sisinnio	1		1
	Davis,Janet L	1		1
	Deannuntis,Christopher P	1		1
	Fabregas,Aldo De Jesus	1		1
	Flynn,Jennifer M	1		1
	Georggi,Nevine L	1		1
	Goodwill,Jay A	1		1
	Gregg,Robert J. Jr.	1		1
	Hendricks,Sara J	1		1
	Hillsman,Edward	1		1
	Hinebaugh,Dennis P		1	1
	Joslin,Ann C	1		1
	Kolpakov,Alexander	1		1
	Kourtellis,Achilleas	1		1
	Kramer,Jeffrey H	1		1
	Lee,Chanyoung	1		1
	Lin,Pei-Sung	1		1
	Mistretta,Mark	1		1
	Morris,William P	1		1
	Perk,Victoria A	1		1
	Pessaro,Brian M	1		1
	Polzin,Steven E		1	1
	Reep,Amber B	1		1
	Reich,Stephen L	1		1
	Sapper,Deborah Buchacz	1		1
	Seggerman,Karen E	1		1
	Staes,Lisa A	1		1
	Thole,Cheryl A	1		1
	Volinski,Joel M	1		1
	Williams,Kristine M		1	1
	Winters,Philip L		1	1
	Wooten,Cindy J	1		1
CUTR Total		36	6	42
EE	Anderson,Adam L			1
	Khanna,Puneet			1
	Krishnan,Subramanian			1
	Miao,Zhixin			1
EE Total				4
ME	Barrett,Patti A.	1		1
	Calvin,William E.	1		1
	Daniel,Jeffrey L.	1		1
	Lujan,Joshua J C	1		1
	Reina,Lexander A.	1		1
	Sundarrao,Stephen	1		1
ME Total		6		6
Grand Total		44	6	54