



where r u headed?



hmmm...  
are you:

- ✧ ★ good at math & science
- ★ curious
- ★ detail-oriented
- ★ creative
- ★ a team player
- ★ logical
- ★ a problem solver
- ★ inquisitive
- ★ analytical
- ★ good communicator



?  
did u  
know...



With an  
Engineering  
degree, you'll  
earn some of the  
highest starting  
salaries!

...if so - you may have an  
exciting future in engineering!



# Programs of Study



- ✦ Chemical Engineering
- ✦ Computer Engineering
- ✦ Industrial Engineering
- ✦ Civil Engineering
- ✦ Information Systems
- ✦ Mechanical Engineering
- ✦ Computer Science
- ✦ Electrical Engineering



A Smart  
Career  
Choice!

- 📦 The 1.6 million engineers in the U.S. earn some of the highest salaries.
- 📦 Engineers have one of the broadest choices of career fields and flexibility.
- 📦 Growth of electronic products = great outlook for engineering job growth - 10-15%! *[Source: U.S. Bureau of Labor Statistics]*



## BS in Electrical Engineering (BSEE)

*circuit boards, computer chips, wireless connectivity*

**Careers:** Cell Phone Systems, Electrical and Power Systems, Computers, Wireless Communications, Robotics, Medical Equipment, Microprocessors

**Average starting salary:** : \$59,326<sup>†</sup>

**Check it out here:** <http://ee.eng.usf.edu>

## BS in Industrial Engineering (BSIE)

*human-machine interface, optimal path traffic planning*

**Careers:** Manufacturing, Logistics, Transportation, Assembly, Consulting, Modeling

**Average starting salary:** \$58,560<sup>†</sup>

**Check it out here:** <http://imse.eng.usf.edu>

## BS in Civil Engineering (BSCE)

*transportation systems, structural design, high strength materials*

**Careers:** Transportation, Structural, Geotechnical, Environmental, Water Resources

**Average starting salary:** \$52,437<sup>†</sup>

**Check it out here:** <http://cee.eng.usf.edu>

## BS in Chemical Engineering (BSCH)

*processors, touch screen, battery technology*

**Careers:** Biomedical, Environmental, Energy, Pharmaceuticals, Food Production

**Average starting salary:** \$66,437<sup>†</sup>

**Check it out here:** <http://che.eng.usf.edu>

## BS in Computer Science (BSCS)

## BS in Computer Engineering (BSCP)

## BS in Information Systems (BSIS)

*computer chips, databases, programming*

**Careers:** Security, Networks, Hardware, Defense, Software Development

**Average starting salary:** \$53,464<sup>†</sup>

**Check it out here:** <http://cse.usf.edu>

## BS in Mechanical Engineering (BSME)

*physical design, manufacturing process*

**Careers:** Automotive, Energy, Robotics, Aerospace, Materials

**Average starting salary:** \$58,881<sup>†</sup>

**Check it out here:** <http://me.eng.usf.edu>



**Examples of roles engineers played in developing this GPS.\***

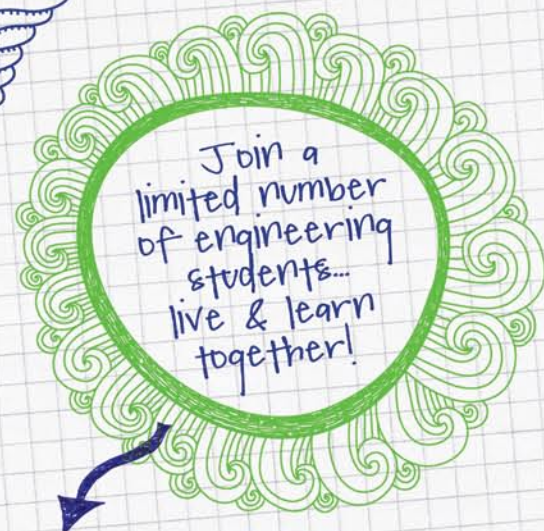
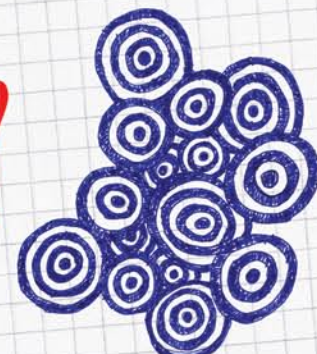
*(\*The careers shown here only refer to the GPS and are not exhaustive of the profession.)*

<sup>†</sup>[source NACE, spring 2010]

# Are you good at math & science?

Admission preferences for undergraduate engineering programs include:

a solid background in **mathematics** (algebra, geometry, trigonometry, and calculus), & **science** (biology, chemistry, and physics).



## Research Experience Program

Directly participate in state-of-the-art research efforts. COE-REU students work as Research Assistants with professors and graduate students on a variety of exciting and interdisciplinary research projects. [www.eng.usf.edu/reu](http://www.eng.usf.edu/reu)

## The Engineering Living Learning Community Program

A Great opportunity to build friendships and a future in engineering. 1st year – Fall & Spring Terms Students in the ELLC program usually co-enroll in the same math, science and Foundations of Engineering courses. You'll receive hands-on mentoring, tutoring and advising support. You'll rely on each other for academic and peer-to-peer support. [www.eng.usf.edu/ugadvising/ELLC.htm](http://www.eng.usf.edu/ugadvising/ELLC.htm)



# USF Engineering Facts...

FYI...

USF College of Engineering has more than 30 student organizations within the college. There's something that applies to every student.

[www.eng.usf.edu/studentorganizations](http://www.eng.usf.edu/studentorganizations)

TOP  
20

Schools in the U.S.  
with Hispanic  
Tenured / Tenured  
Track Faculty\*

TOP  
40

Undergraduate  
Enrollments - by  
school in the U.S.\*



**Play a big role  
in daily lives!**

- Invent new products
- Solve world problems
- Make life on Earth better

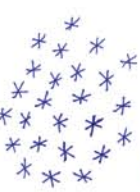
## Engineering EXPO:

- This two-day event displays science and engineering projects and experiments.
- Student-run organization held every spring
- Attended by businesses and students throughout the Tampa Bay Area.

<http://expo.eng.usf.edu>

TOP  
50

Engineering Schools in  
the U.S. - for awarding  
bachelor's degrees  
to women\*

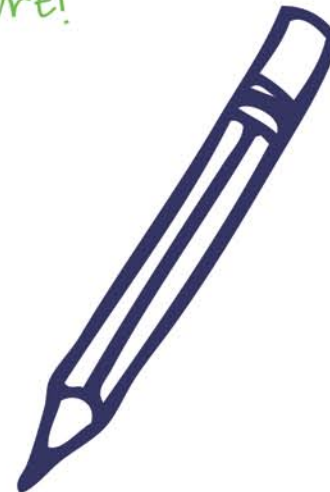


# Change the world with us!

You'll have fun visiting our college.  
Together, we'll plan your Engineering future!

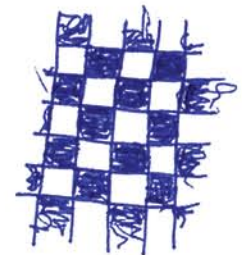


We'll guide your way with information on:  
curriculum, scholarships, student organizations,  
academic support services, undergraduate  
research opportunities, internships, study  
abroad, co-ops & more!



Contact Michael Guinn at  
[eng-outreach@usf.edu](mailto:eng-outreach@usf.edu)  
or call 813-974-0773  
[www.eng.usf.edu](http://www.eng.usf.edu)

apply now: [www.usf.edu/admissions](http://www.usf.edu/admissions)



The University of South Florida Bachelor of Science degree programs in Chemical Engineering, Civil Engineering, Computer Engineering, Electrical Engineering, Industrial Engineering and Mechanical Engineering are accredited by the Engineering Accreditation Commission of the Accreditation Board for Engineering and Technology. The Bachelor of Science in Computer Science program at the University of South Florida is accredited by the Computing Accreditation Commission of the Accreditation Board for Engineering and Technology.

ABET 111 Market Place, Suite 1050, Baltimore, MD 21202-4012 telephone: (410) 347-7700 [www.abet.org](http://www.abet.org)