

# ENG9001 Computer Vision

## Lab Instruction

Lab: ENB 110

### Kinect Camera

#### Description:

1. Outlet adapter.
2. Adapter for power/usb split.
3. USB 2.0 end.

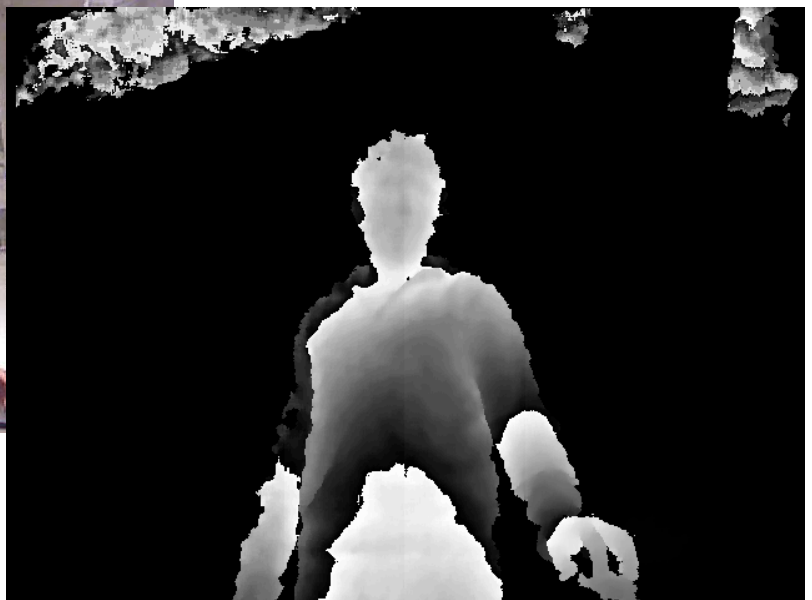
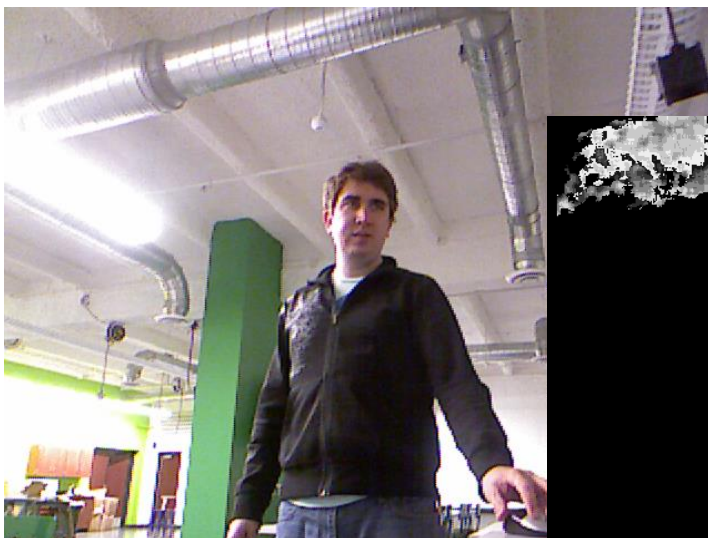
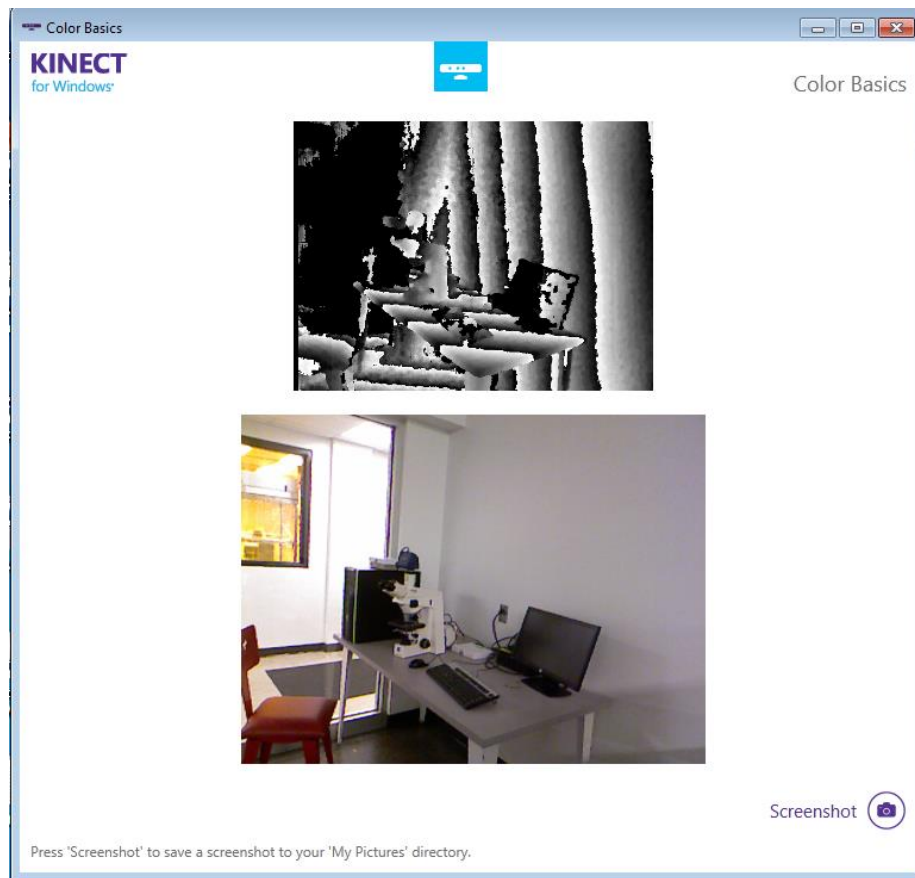
#### Task:

Acquire depth and color image from Kinect.

#### Steps:

1. Open ColorBasicsWPF on desktop.
2. Click on Capture.
3. Take several images of different models to answer the following:
  - a. For each model, take 3D images of the model at different distances to the camera. What are the empirical differences in the quality of the 3D data at different distances?
  - b. What affect does the surface property have on the acquired 3D data?
4. All images are saved to the windows Pictures/ folder.





## Logitech C910 HD Webcam



**Task:** Record HD video.

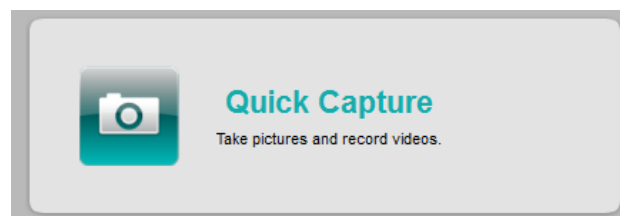
### **Steps:**

1. Click on Logitech webcam software
2. Click Quick Capture.
3. Move the slider to video if it is not already.
4. Click on the video camera to begin recording
5. Record several videos using different resolutions in the controls tab
6. Record a video that tracks your face.
7. Click on preferences and set the output path of the video.

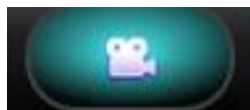
1)



2)



4)



5)

